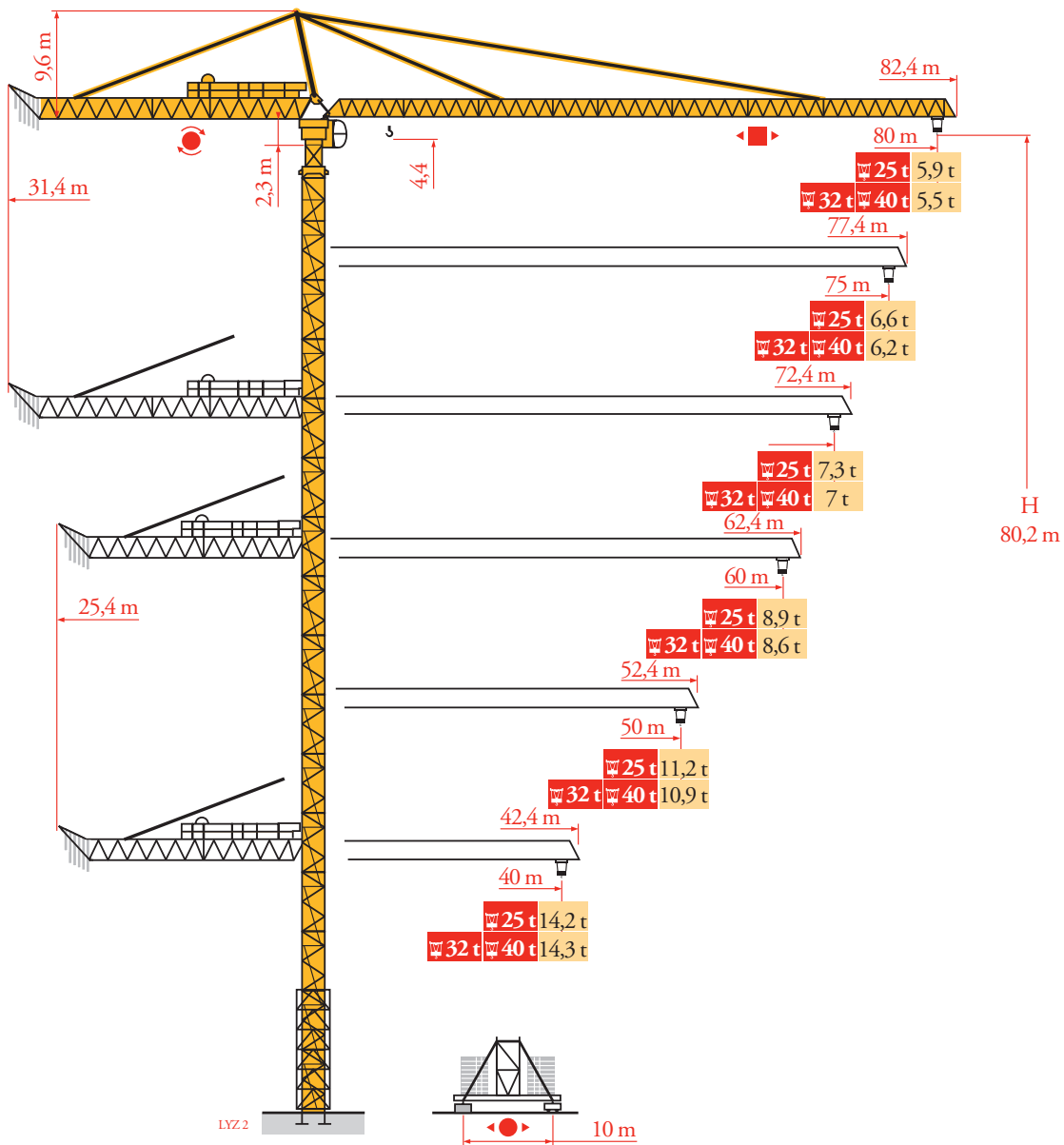
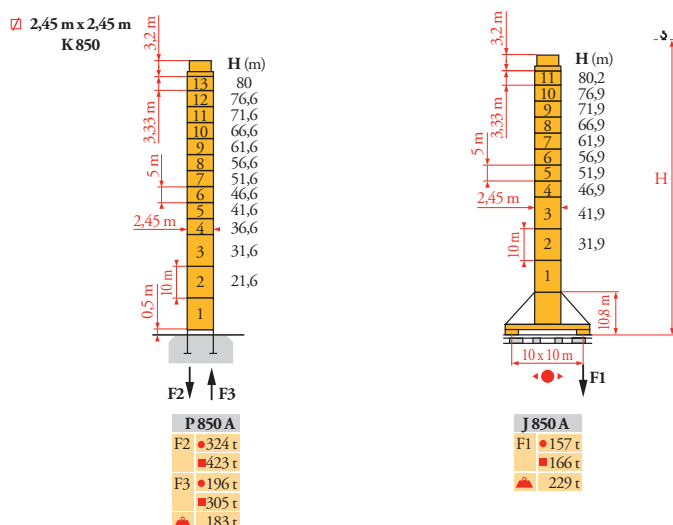


# Potain MD 650



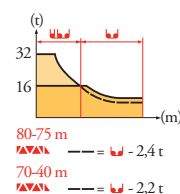
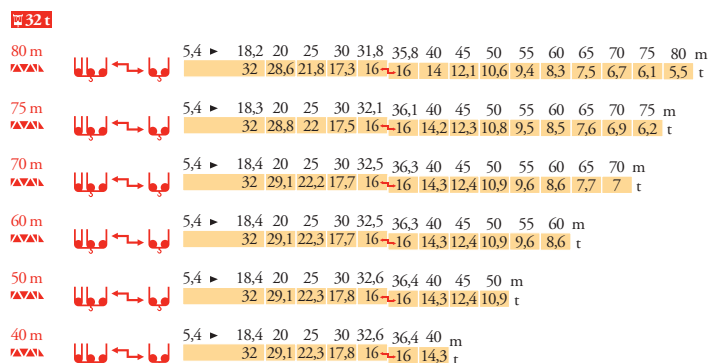
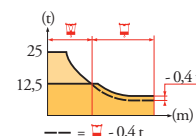
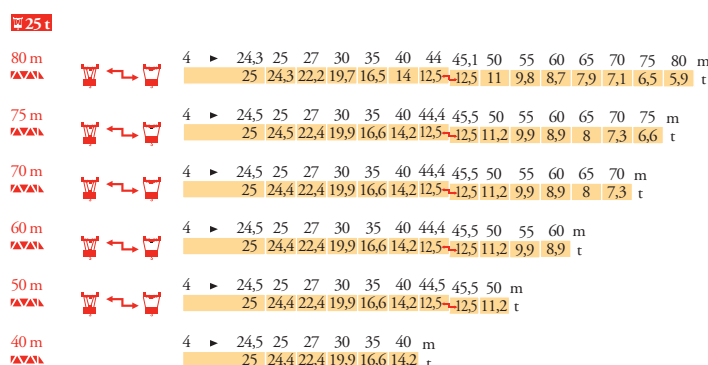
Mat / Réactions  
 Maste / Eckdrücke  
 Masts / Reactions  
 Mástil / Reacciones  
 Torre / Reazioni  
 Tramo / Reacções  
 Композиции башни /  
 Реакции

LV23



Courbes de charges  
 Lastkurven  
 Load diagrams  
 Curvas de cargas  
 Curve di carico  
 Curva de cargas  
 Диаграммы  
 грузоподъемностей

LV23



FR

- Réactions en service
- Réactions hors service
- 🏗️ A vide sans lest (ni train de transport) avec flèche et hauteur maximum

DE

- Reaktionskräfte in Betrieb
- Reaktionskräfte außer Betrieb
- 🏗️ Ohne Last, Ballast (und Transportachse), mit Maximalausleger und Maximalhöhe

EN

- Reactions in service
- Reactions out of service
- 🏗️ Without load, ballast (or transport axles), with maximum jib and maximum height

ES

- Reacciones en servicio
- Reacciones fuera de servicio
- 🏗️ Sin carga, sin lastre, (ni tren de transporte), flecha y altura máxima

IT

- Reazioni in servizio
- Reazioni fuori servizio
- 🏗️ A vuoto, senza zavorra (ne assali di trasporto) con braccio massimo e altezza massima

PT

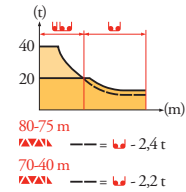
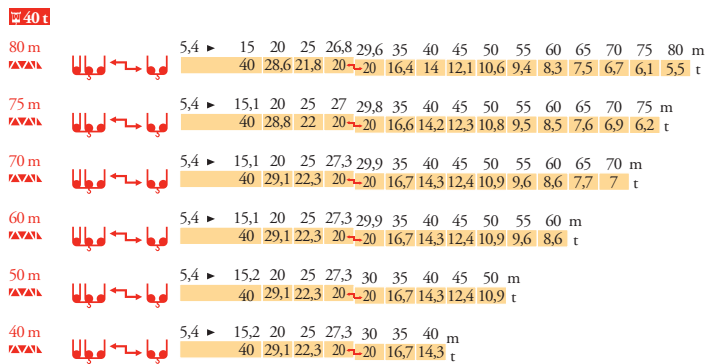
- Reacções em serviço
- Reacções fora de serviço
- 🏗️ Sem carga (nem trem de transporte)- sem lastro com lança e altura máximas

RU

- Реакции при работе
- Реакции в покое
- 🏗️ Вес без груза, балласта (или транспортных осей), с максимальной длиной стрелы и максимальной высотой

Courbes de charges  
 Lastkurven  
 Load diagrams  
 Curvas de cargas  
 Curve di carico  
 Curva de cargas  
 Диаграммы  
 грузоподъемностей

LYZ<sub>3</sub>



Lest de contre-flèche  
 Gegenauslegerballast  
 Counter-jib ballast  
 Lastre de contra flecha  
 Contrappeso  
 Lastros da contra lança  
 Балласт на консоли

LYZ<sub>3</sub>

|      | 5 900 kg - 4 200 kg - 2 800 kg |         |         |
|------|--------------------------------|---------|---------|
|      | 150 LCC                        | 250 LCC | 200 LBR |
|      | (kg)                           | (kg)    | (kg)    |
| 80 m | 31,4 m                         | 33 700  | 33 700  |
| 75 m | 31,4 m                         | 32 300  | 32 300  |
| 70 m | 31,4 m                         | 27 800  | 27 800  |
| 60 m | 25,4 m                         | 33 700  | 33 700  |
| 50 m | 25,4 m                         | 27 800  | 27 800  |
| 40 m | 25,4 m                         | 21 900  | 21 900  |

Lest de base - Grundballast  
 Base ballast - Lastre de base  
 Zavorra di base - Lastros da base  
 Базовый балласт

LYZ<sub>3</sub>

| 2,45 m | J 850 A | H (m) | 80,2 | 76,9 | 71,9 | 66,9 | 61,9 | 56,9 | 51,9 | 46,9 | 41,9 | 36,9 | 31,9 |
|--------|---------|-------|------|------|------|------|------|------|------|------|------|------|------|
|        |         |       | (t)  | 60   | 60   | 60   | 60   | 60   | 60   | 60   | 60   | 60   | 60   |
|        |         |       | 60   | 60   | 60   | 60   | 60   | 60   | 60   | 60   | 60   | 60   | 60   |



**FR**

Nous consulter

**DE**

Auf Anfrage

**EN**

Consult us

**ES**

Consultarnos

**IT**

Consultateci

**PT**

Consultar-nos

**RU**

Проконсультируйтесь у нас

Mécanismes  
Antriebe  
Mechanisms  
Meccanismi  
Mecanismos  
Механизмы

LYZ 6

|                        |                     |               |      |                        |  |        |      |          |                 |   |        | ch-PS<br>hp | kW     |     |     |       |       |
|------------------------|---------------------|---------------|------|------------------------|--|--------|------|----------|-----------------|---|--------|-------------|--------|-----|-----|-------|-------|
|                        | 150 LCC<br>63       |               | 25 t | m/min                  | 46   | 56     | 70   | 92       | 110             | 23  | 28     | 35          | 46     | 55  | 150 | 110   | 461 m |
|                        |                     |               |      | t                      | 12,5   | 9,4    | 6,25 | 3,1      | 1,6             | 25  | 18,8   | 12,5        | 6,2    | 3,2 |     |       |       |
|                        |                     | 250 LCC<br>80 |      | 32 t                   | m/min  | 52     | 68   | 86       | 108             | 122   | 26     | 34          | 43     | 54  |     |       |       |
|                        |                     |               |      | t                      | 16   | 12     | 8    | 4        | 2               | 32  | 24     | 16          | 8      | 4   |     |       |       |
|                        | 250 LCC<br>100      |               | 40 t | m/min                  | 46   | 60     | 76   | 96       | 108             | 23  | 30     | 38          | 48     | 54  | 250 | 180   | 488 m |
|                        |                     |               |      | t                      | 20   | 15     | 10   | 5        | 2,5             | 40  | 30     | 20          | 10     | 5   |     |       |       |
|                        | 15 DVF 16           |               | 25 t | m/min                  | 0 → 47 (25 t) - 0 → 63 (12,5 t) - 0 → 76 (6,25 t) - 0 → 100 (3,13 t) |        |      |          |                 |   |        |             |        |     |     |       |       |
|                        |                     |               | 32 t | m/min                  | 0 → 33 (32 t) - 0 → 50 (16 t) - 0 → 67 (8 t) - 0 → 100 (2 t)         |        |      |          |                 |   |        |             |        |     |     |       |       |
|                        |                     |               | 40 t | m/min                  | 0 → 33 (40 t) - 0 → 50 (20 t) - 0 → 67 (10 t) - 0 → 100 (2,5 t)      |        |      |          |                 |   |        |             |        |     |     |       |       |
|                        | 200 LBR<br>100      |               | 40 t | m/min                  | 3,6/36   | 5,6/56 | 9/90 | 14,4/144 | 1,8/18          | 2,8/28  | 4,5/45 | 7,2/72      |        | 200 | 150 | 650 m |       |
|                        |                     |               |      | t                      | 20   | 12,3   | 7,2  | 4        | 40              | 24,4  | 14,3   | 8           |        |     |     |       |       |
|                        | 15 DVF 16           |               | 40 t | m/min                  | 0 → 50 (20 t)  |        |      |          | 0 → 33 (40 t)   |   |        |             |        | 15  | 11  |       |       |
|                        |                     |               |      |                        | 0 → 67 (7,5 t)   |        |      |          | 0 → 67 (8,2 t)  |   |        |             |        |     |     |       |       |
|                        |                     |               |      |                        | 0 → 100 (2,5 t)  |        |      |          | 0 → 100 (2,5 t) |   |        |             |        |     |     |       |       |
|                        | RVF 192<br>Optima + |               |      | tr/min<br>U/min<br>rpm | 0 → 0,6  |        |      |          |                 |   |        | 2 x 15      | 2 x 11 |     |     |       |       |
|                        | J 850 A             |               |      | m/min                  |  |        |      |          |                 |   |        |             |        |     |     |       |       |
| CEI 38                 |                     |               |      |                        | IEC 38   |        |      |          |                 |   |        |             |        |     |     |       |       |
| 400 V (+6% -10%) 50 Hz |                     |               |      |                        |  |        |      |          |                 | 150 LCC : 190 kVA<br>250 LCC : 350 kVA<br>200 LBR : 240 kVA |        |             |        |     |     |       |       |

|  |              |  |            |  |            |  |              |  |               |  |              |  |                     |
|--|--------------|--|------------|--|------------|--|--------------|--|---------------|--|--------------|--|---------------------|
|  | <b>FR</b>    |  | <b>DE</b>  |  | <b>EN</b>  |  | <b>ES</b>    |  | <b>IT</b>     |  | <b>PT</b>    |  | <b>RU</b>           |
|  | Levage       |  | Heben      |  | Hoisting   |  | Elevación    |  | Sollevamento  |  | Elevação     |  | Подъем              |
|  | Distribution |  | Katzfahren |  | Trolleying |  | Distribución |  | Distribuzione |  | Distribuição |  | Перемещение каретки |
|  | Orientation  |  | Schwenken  |  | Slewing    |  | Orientación  |  | Rotazione     |  | Rotação      |  | Поворот             |
|  | Translation  |  | Kranfahren |  | Travelling |  | Traslación   |  | Traslazione   |  | Translação   |  | Перемещение крана   |



Document commercial non contractuel. Pour toute information technique se référer à la notice correspondante.

Unverbindliches Vertriebsdokument. Für technische Informationen, siehe die entsprechenden Anweisungen.

This commercial document is not legally binding. For any technical information, please refer to the corresponding instructions.

Documento commercial no contractual. Para cualquier información técnica, ver la noticia correspondiente.

Documento commerciale non vincolante, per tutte le informazioni tecniche fare riferimento al catalogo istruzioni.

Documento comercial não contratual. Para qualquer informação técnica complementar consultar as respectivas instruções.

Этот коммерческий документ не является юридически обязательным. Для получения технической информации, см. соответствующие инструкции.



**Manitowoc - Americas - World Headquarters**  
2400 S. 44th Street • Manitowoc • WI 54220 USA  
Tel: +1 920 684 4410 • Fax: +1 920 652 9778

**Manitowoc - Europe, Middle East & Africa**  
Manitowoc France SAS  
18, rue de Charbonnières B.P. 173 • 69132 ECULLY Cedex • FRANCE  
Tel: +33 (0)4 72 18 20 20 • Fax: +33 (0)4 72 18 20 00

**Manitowoc - Asia Pacific**  
16F Xu Hui Yuan Building,  
1089 Zhongshan No.2 Road (S) • Shanghai 200030 China  
Tel: +86 21 6457 0066 • Fax: +86 21 6457 4955

MD 650

REF. 2003 48 LYZ 6